



# The Spirit of All Souls

## Letter from Rob

### In this issue

Upcoming services	2
Membership/welcoming	2
Social Justice	3
Intern's Corner	3
Church governance	4
Annual Giving	4
Third Century Challenge	5
ASD	6
CRE	6
Events	7
Vision Statements	8



**Rev. Dr. Susan Newman**  
Associate Minister  
for Congregational Life  
and Pastoral Care  
[snewman@allsouls.ws](mailto:snewman@allsouls.ws)

All Souls Church Unitarian

1500 Harvard Street NW  
Washington DC 20009

202.332.5266  
[www.all-souls.org](http://www.all-souls.org)

### Blessing

I write this on Yom Kippur, the Day of Atonement, a day when Jews take stock of the past year, forgive themselves and others, and begin again in love. In a powerful service on Sep. 27, we made those same commitments to one another.

A colleague recently introduced me to a poem by the Jewish poet Marge Piercy. The poem is a good example of the ancient Jewish practice of being mindful of and grateful for our blessings. I share it with you in hopes that it will begin our common reflection on this month's spiritual theme.



**Rev. Dr. Robert M. Hardies**  
Senior Minister  
[rhardies@allsouls.ws](mailto:rhardies@allsouls.ws)

### Kaddish

Look around us, search above us, below, behind.  
We stand in a great web of being joined together.  
Let us praise, let us love the life we are lent...  
let us say amen.

Time flows through us like water.  
The past and the dead speak through us.  
We breathe out our children's children, blessing.

Blessed is the earth from which we grow,  
Blessed the life we are lent,  
blessed the ones who teach us,  
blessed the ones we teach,  
blessed is the word that cannot say the glory  
that shines through us and remains to shine  
flowing past distant suns on the way to forever.  
Let us say amen.

Blessed is light, blessed is darkness,  
but blessed above all else is peace  
which bears the fruits of knowledge  
on strong branches, let us say amen.

Peace that bears joy into the world,  
peace that enables love, peace over Israel  
everywhere, blessed and holy is peace, let us say amen.

Abundant are the blessings of our lives. This month we give thanks for those blessings and ask how we, in turn, can bless the world. I look forward to seeing you in church!

Love, Rob

## Blessings

Oct. 7: **To Bless and Be Blessed.** Rev. Hardies. A lady at the grocery store tells me: “Have a bless’t day!” Jesus said “Blessed are the meek, for they shall inherit the earth.” What does it mean to be blessed? How do we both give and receive blessings?

Oct. 14: **The Power of Choice.** Rev. Hardies. In just under a month, Americans go to the polls to choose the next leader of our nation. It is a choice of great consequence. But so are many of the choices we make. This morning we explore the spiritual and ethical power of choice.

Oct. 21: **Generosity Sunday.** Rev. Newman.

Oct. 28: **Bending the Arc.** Cathy Rion Starr. “The arc of the moral universe is long, but it bends towards justice,” 19th century Theodore Parker is famously paraphrased. How do we know that the arc really bends towards justice? How do we know that we’re bending it in the right direction? How can we sustain our spirits as we roll up our sleeves to mess around in the muck of change-making? As the election approaches, in the midst of war, environmental and economic crisis, we’ll wrestle with the contradictory nature of “fighting” for justice filled with love and joy.

## Membership and Welcoming

Deciding to join All Souls is a commitment—one that we hope will enrich your life. All Souls encourages all its members to

- worship regularly at Sunday services;
- serve the church;
- connect with other congregants; and
- support All Souls with personally generous financial contributions.

**Step 1: Welcome to All Souls.** Learn and ask questions about Unitarian Universalism and All Souls Church. This session takes place after each service (both 9:30 and 11:15 AM), is informal, and lasts about an hour. No registration necessary.

- Sunday, Nov. 4

**Step 2: New Member Orientation.** Prospective members learn more about Unitarian Universalism, All Souls Church, and what being a member means. Those who choose to can sign the Membership Book (no obligation), make their

financial pledge, and have their picture taken for the member directory. To register, go to [all-souls.org](http://all-souls.org) and click on the Adult Spiritual Development button.

- Sunday, Nov. 11, 1:15—3:00 PM

**Step 3: New Member Sunday.** New members are introduced and formally welcomed to the community at an ingathering ceremony during a Sunday service.

- Sunday, Oct. 28
- Sunday, Dec. 9

All are welcome to attend these sessions. Attendance does not constitute a commitment to join All Souls Church. Questions? Contact Amy.



**Amy Mulry Wesolek**  
Director of Membership and Welcoming  
[amulrywesolek@allsouls.ws](mailto:amulrywesolek@allsouls.ws)

# Social Justice Ministries

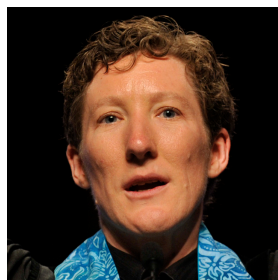
Some of you have asked what I do as director of social justice ministries. The simple answer is that I work with our justice projects, coordinate with other program areas to integrate justice and service into all we do, and I hope to also support those of you who “do justice” six days a week and come to All Souls on Sundays to recharge. Social justice isn’t just in my purview—we live out our values when the Jubilee Singers sing at community events, when our children learn about fairness, when we deepen our understanding of institutional racism, and in so many other ways. There’s so much going on that it’s hard to keep track, so here’s quick summary of the eight projects that I support.

Our four priority areas are:

**Housing.** In our work through the Washington Interfaith Network (WIN) and the All Souls Housing Corporation, we do community organizing and advocate for fair housing.

**Environmental justice.** The Green Souls/Seventh Principle Committee works to decrease our internal environmental footprint and create a greener, healthier DC.

**Peace.** The Hiroshima Children’s Drawings and Global Souls form international connections, making



Cathy Rion Starr  
Director of Social Justice  
Ministries  
crionstarr@allsouls.ws

our world a more communicative, peaceful place.

**Immigration.** This is our “incubator issue.” Folks are working to support the DREAM Act on Maryland’s November ballot. We also run a growing ESL program for our immigrant neighbors every Sunday.

We also have:

**Beckner Committee.** This endowment gives away nearly \$100,000 each year to Ward 1 organizations and to our own social justice endeavors.

**New Orleans intergenerational service trip.** Every spring since Katrina, we’ve sent groups to assist New Orleaners as they rebuild their city.

**Thanksgiving collection.** Every year, we assemble over 500 dinners for those in need.

**KUUMBA Players.** This group addresses a variety of issues through theater arts.

If this list feels overwhelming, sign up for my November class, *Spiritual Renewal for Justicemakers*! Or, drop me a line so I can help you find a good fit for you to be involved.

We are indeed a justice-seeking community! May our spirits grow as we seek justice together.

Cathy

## Intern’s Corner

I’m sitting in the library at All Souls as I write this article, curls of bergamot-scented steam rising up from my cup of Earl Grey tea. Wrapping my hand around my warm teacup feels like holding a friend’s hand. I am reminded to savor the afternoon. To be present to my senses. To relax my shoulders and slip off my shoes. This tea is exactly what I need to counter a week of long to-do lists and back-to-back meetings.

Tea can be exactly what we need, whether that’s relaxation or awakening, finding balance or finding focus. Blessings work the same way.

To bless is to infuse with holiness. All Souls is a community of blessing. Each of us offers each other blessings every time we gather.

At his first service at All Souls, one member told me that Rev. Hardies concluded his sermon by saying “whoever you are, whomever you love, you are welcome here. You.” “As a musician, I had spent a lot of time in churches, but as a gay man, I had never felt fully comfortable in them,” he told me. “But I knew Rob was speaking to me. For the first time, I felt truly welcome in a church.” Rob offered the blessing of welcome to a wary stranger. He infused the stranger with the holiness of acceptance. That stranger became a leader, and since then, he has worked hard to strengthen the music program here.

One of the participants of that program, a choir member with a beautiful voice, tells me that she hadn’t sung in public for years before coming to All Souls. “I came for the worship, but some choir members heard me singing in the pews and invited me to join the choir. It feels so good to be singing again.” The choir members



Abbey Tennis  
Intern Minister  
atennis@allsouls.ws

*Continued on page 7*

## Board of Trustees

As we settle into the new church year, it's time for all of us to help sustain All Souls in 2013 by pledging to the **Annual Giving Campaign**. This year's campaign has three co-chairs, all relatively new to our congregation: Chuck Dulaney, Donna Olsen, and Anne Bradley.

This past year, we laid the groundwork for realizing our dreams for future generations through the Third Century Challenge capital campaign. In an analogy offered by Anne, a once-in-a-generation capital campaign pays for the doors, but it's the Annual Giving Campaign that keeps the doors open. Robust annual giving lets us retain our top-notch ministerial team and talented, committed staff. It provides our expanding congregation with the resources to offer opportunities for spiritual growth to all who enter and to extend our reach in the community.

The Board is responsible for wisely stewarding the church's financial resources, and we play a leadership role in annual giving. That's why, as we urge our members to meet this year's goal of 100% participation, we are jump-starting the campaign by pledging early.

Many of us have been stretched by the Third Century Challenge. Still, to maintain our programming, All Souls needs every one of us who pledged in 2012 to give at the same rate in 2013, and everyone else to make their first gift of whatever amount they can.

Some exciting innovations will make annual giving easier—and substantially reduce the fundraising church's costs. You can make your pledge online on All Souls' beautiful new website. If you prefer paper, this year's brochure—which explains the differences and similarities between annual and capital giving—doubles as a pledge card. Both the online and offline forms provide clear instructions and guidance on the payment method that nets the most for All Souls (electronic payment initiated by members using online banking).

The trustees and officers are piloting the new pledge process, and giving it rave reviews. Try it yourself. Join the fun!

If you have questions, contact the campaign co-chairs—Chuck, Donna, and Anne at [AscuAnnualGiving@gmail.com](mailto:AscuAnnualGiving@gmail.com).

Kathy Mulvey, Trustee







# Third Century Challenge

*Building on our heritage. Realizing our dreams.*

## CAPT

Now that the capital campaign is winding down, the Comprehensive Assets Planning Team (CAPT) is ready to help All Souls move toward a final plan for renovating the church's building and grounds. Last year's comprehensive discussions with the congregation were based on a conceptual plan that assumed a budget of \$14.7 million. Now, we must pare down the plan by almost \$5 million (unless we can raise more money!). In consultation with the Kerns Group, our architects, CAPT has identified some ways to reduce the original plan while still meeting most of our important priorities: the integrity of the building's exterior envelope; sustainability; accessibility both into and within the building; an opening up of the lower level; improved and additional bathrooms; a more welcoming Harvard St. entrance and lobby; an improved Pierce Hall and kitchen; and better staff offices.

We now enter a phase called the "schematic design process," in which a series of discussions refine the design elements and our priorities. Work in this phase includes completing preliminary floor plans, coordinating with consultants (e.g., engineering, landscape, structural, mechanical, electrical, plumbing, sustainability) and determining a detailed cost estimate. A key component of that process will be the **Design Ideas Fair**, hosted by CAPT and Kerns. On **Sat., Oct. 20**, starting at 9:00 am, members of the congregation will gather in small groups, facilitated by Kerns experts, that focus on sustainability, systems, and envelope integrity. There, they can learn technical information, discuss design alternatives, and voice opinions. After CAPT and the Kerns Group have absorbed the feedback, CAPT

will schedule additional discussions with interested members before making final recommendations, first to the Board and then to the full congregation, which will vote on the plan, probably in early 2013. Please address comments and questions to CAPT Co-Chairs Barbara Corprew ([barbara-corprew@USDOJ.gov](mailto:barbara-corprew@USDOJ.gov)) and Tom Fox ([thfoxDC@gmail.com](mailto:thfoxDC@gmail.com)), or to Executive Director Katie Loughary ([kloughary@allsouls.ws](mailto:kloughary@allsouls.ws)).

## Pledge FAQs

*When can I start paying on my pledge?*

Immediately! The sooner we start, the better our situation. Monthly contributions are pulled on the 5th or 20th of each month. Quarterly contributions are pulled in January, April, July, and October. Annual contributions for the campaign can start in any month you designate. If you have already indicated your preferred payment plan and sent that information to us with your pledge, thank you. If you wish to be more specific than your pledge card outlined, contact Executive Director Katie Loughary ([kloughary@allsouls.ws](mailto:kloughary@allsouls.ws); 202-332-5266 ext. 103) with that information.

*Can I pay my entire pledge now?*

If you are in a position to pay your entire payment in one lump sum (for instance, out of your IRA or from stock) and choose to do that, the church would have more money in hand and thus have to borrow less.

*How can I fulfill my pledge?*

The very best way to pay is to enroll in some sort of autopay. The option that saves the church the most in fees is setting up e-checking with your bank. Simply send a voided check with your pledge card; we'll get your bank to send the church e-checks. This costs the church nothing

and maximizes your donation. The church uses ParishPay to process credit card payments and to pull payments from your checking account. This costs 1% of the funds received, plus the additional credit card fees, which run about 2.5-3% depending on the vendor (AMEX is more expensive). Additionally, ParishPay charges \$1 for a failed transaction - which happens when someone changes a credit card number or closes a bank account. Parish Pay has helped the church maintain a regular cash flow over the past ten years, so it has been advantageous to use, but new electronic auto-payments are even better!

*What about paper checks?*

Sure. Checks can be mailed to the church (1500 Harvard Street NW, Washington DC 20009) or put in the offering plate any Sunday. Please remember to write "Third Century Challenge" in the memo line or it will be considered a general donation and go into operating funds.

*Cash?*

You can put cash in an envelope into the offertory plate. Please mark the envelope with your name and "Third Century Challenge" so the church knows to apply the donation to your pledge.

*Can I make a gift of stock, mutual funds, or some other sort of donation?*

Yes, indeed. Contact Executive Director Katie Loughary ([kloughary@allsouls.ws](mailto:kloughary@allsouls.ws); 202-332-5266 ext. 103) for further information.

*How do I know the status of my gifts to the church?*

Your contributions to both annual giving (which covers the church's operating budget) and the Third Century Challenge are reported in your quarterly and annual giving statements, sent to all pledging members of the congregation.

Other questions? Email the Third Century Challenge Committee ([thirdcenturychallenge@allsouls.ws](mailto:thirdcenturychallenge@allsouls.ws)).

# Lifespan religious education and family ministries

The best place to keep up with our latest offerings is the website, where you can also register for classes. Whatever your style, whatever you seek, we have something for you. And the ASD program can only increase if we know what you'd like to see or what you're willing to lead. Email me your ideas, and we'll take it from there. Meagan

## Get centered

*Beginner-Friendly Yoga.* Saturdays, 1:00-2:30, through Oct. 13.

*Chi Kung.* Saturdays, 10:00-11:00, through Oct. 27.

*Finding Your Still-Point.* Practice exercises/meditations that bring you to the quiet place within to help you cope with life's exigencies. Sat., Oct. 27, 9:30-12:30.

## Get history

*What Moves Us: Unitarian Universalist Theology.* How do the spiritual reflections of well-known Unitarians and Universalists from the 19th and 20th centuries echo our own? Tuesdays, Oct. 2-30, 7:00-9:00 pm.

## Get informed

*Green Souls Ethical Eating Documentary Series* (no registration needed).

- Sun., Oct. 21, 1:30 pm. *The Dark Side of Chocolate* investigates the connections between the chocolate industry and human trafficking and child labor in the Ivory Coast.
- Sun., Nov. 18, 1:00 pm. *Bitter Seeds: The Human Toll of GMOs* documents the effects of genetically modified organisms on rural farming communities in India.

## Get on the right side

The monthly *Pathways for White Allies* discussion group gives people with white skin privilege the chance to discuss racism and how to be stronger anti-racist allies. Next discussion: Wed., Oct. 10, 7:00-9:00.

## Get recharged

*Spiritual Renewal For Justice-Makers.* After the hard work of justice-making, reground yourself through spiritual reflection and practices. Tuesdays, Nov. 13, 20, 27, 6:30-8:30.

**Register for these  
classes and more  
online at  
[www.all-souls.org](http://www.all-souls.org)**



**Meagan Henry**  
Director of Lifespan Religious  
Education and Family Ministries  
[mhenry@allsouls.ws](mailto:mhenry@allsouls.ws)

## The Divine at every portal

As Gary Penn installed a mezuzah at the threshold of the Children's Chapel, he recited this Hebrew prayer: *Barukh atah Adonai, Eloheinu, melekh ha'olam asher kidishanu b'mitz'votav v'tzivanu lik'bo'a m'zuzah*. In English, it translates "Blessed are you, Lord, our G-d, sovereign of the universe, who has sanctified us with His commandments and commanded us to affix a mezuzah."



**Nikevia A. Thomas**  
Children's Religious Educator  
[nthomas@allsouls.ws](mailto:nthomas@allsouls.ws)



In the Jewish tradition, a mezuzah is placed at the doorpost of a house or room. Upon entering the space, the mezuzah is kissed as a constant reminder of the presence of G-d. The mezuzah is a metaphor for life and signifies a passageway from one space to another. The divine is at every portal. Every moment in life is a portal, a threshold that connects polarities: human beings to G-d, physical to spiritual, secular to sacred, demon to divine, death to life. And if we recognize this reality, we begin to see that life is a continuum and there is no separation between anything. Therefore, distinctions

are of a degree and not of a kind.

The presence of a mezuzah reminds us that there is no distinction between us and the divine and re-members our connection to G-d. If we re-member our connection to G-d, then we re-member who we are. What a blessing it is to know who we are and to remain in constant communication with the source of all life. And so when we touch the mezuzah, we are connecting our beings to every portal, everywhere.

Blessed are you, who know who you are,

Nikevia



Continued from page 3

recognized a hidden gift in a stranger in the pews and invited her to share that gift with the congregation. They infused the stranger with the holiness of confidence. That stranger became a singer in the choir, and since then, she has used her voice to lift the souls of the congregation on Sunday mornings.

During a recent solo sung by this singer, a newcomer to the congregation was moved to tears. Seeing her sitting alone, crying, a long-time member of the congregation approached her. "Welcome to All Souls," he said. "I cried every service for my first three years here." The long-time member recognized himself in the stranger, and welcomed her in the fullness of her tear-stained, open-hearted self. He infused the stranger with the holiness of compassion.

Blessings work like tea bags. We offer someone a blessing of welcome, invitation, or compassion and it steepes in that person. The welcomed one's handshake feels like a warm teacup in a stranger's hand. The invited one's song rises into the balcony on Sunday morning like bergamot-scented curls of steam. The one shown compassion becomes a reminder to relax our shoulders and slip off our shoes at the end of a long afternoon.

When I arrived at All Souls just over a month ago, a stranger to most of you, I knew it was a special place. But I couldn't have known then how steeped I would become in this community's blessings. You have offered me the same blessings you offered the wary stranger, the silent singer, and the crying newcomer. But perhaps the greatest blessing you have offered me is the sharing of your stories – whether of heartbreak or joy, pain or transformation. You have infused me with the holiness of spiritual companionship. You remind me daily why I am called to ministry. When meetings run back-to-back, and the to-do list seems endless, you are my relaxing cup of tea.

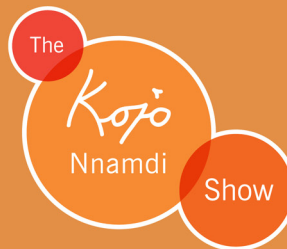
And, like a cup of tea, or the gift of a blessing, you are exactly what I need.

In faith, Abbey

## Kojo in Your Community

### Community Issues, Community Conversation

The *Kojo Nnamdi Show* is leaving the studios to broadcast from Columbia Heights, and you're invited to be part of the discussion! Join host Kojo Nnamdi to ask questions, make comments, and share the view from your neighborhood.



**Wednesday, October 10, 2012**  
**Doors open at 5:30 p.m.**

All Souls Unitarian Church  
1500 Harvard St. NW, Washington, D.C., 20009

- Free and open to the public, no RSVP required
- Metro accessible: Columbia Heights (Green/Yellow Line)

For more information, visit [kojoshow.org](http://kojoshow.org)

This event will broadcast on WAMU 88.5 on October 11, 2012



**WAMU 88.5**  
AMERICAN UNIVERSITY RADIO

## Rochelle Rice in concert, Sun., Oct. 21

**Jazz for an Afternoon.** Rochelle Rice, All Souls Choir's gifted jazz soloist, will appear in recital accompanied by Warren Wolf, piano, Eric Wheeler, bass, and John Lamkin, drums, three of the area's finest young jazz talents. Rochelle plans a mixed program of jazz standards with some fresh new original material.

Encouraged by her mother, also a singer, Rochelle began singing at an early age, continued through East Carolina College, where she studied classical voice and had leading roles in theatrical performance, and then came to Howard University where, this past spring, she received her master's degree in Jazz Studies. While at Howard, as a teaching assistant, she directed a jazz choir and was a member of Afro Blue, Howard's award-winning jazz vocal ensemble, directed by Connaitre Miller. As a part of that group, Rochelle has sung with Bobby McFerrin, Geri Allen, Carmon Lundy, Esperanza Spalding, Jon Hendricks, the late Billy Taylor, and many more. Currently, in addition to sharing the care for their young year-old daughter, Ruth, with husband, Stephen Benson, Rochelle continues to share her gift by performing, recording, and teaching private voice lessons.

Sun., Oct. 21, 3:30 pm, Sanctuary. \$20 adults/\$10 students.



To build the Beloved Community, All Souls Church cultivates and celebrates . . .

. . . **spiritual growth and transformation** as we question, learn from others, and seek lives of meaning and reverence.

. . . **a welcoming, diverse, and vibrant community** where we love, respect, and care for one another.

. . . **service and prophetic action** to move the world toward justice, healing, and sustainability.

#### Staff

Robert Hardies, Senior Minister (rhardies@allsouls.ws)  
Susan Newman, Assoc. Minister of Congregational Life and Pastoral Care (snewman@allsouls.ws)  
Katie Loughary, Executive Director (kloughary@allsouls.ws)  
Cathy Rion Starr, Director of Social Justice Ministries (cristarr@allsouls.ws)  
Abbey Tennis, Intern Minister (atennis@allsouls.ws)  
Meagan Henry, Director of Lifespan Religious Education and Family Ministries (mhenry@allsouls.ws)  
Nikevia Thomas, Children's Religious Educator (nthomas@allsouls.ws)  
Thomas Colohan, Music Director (tcolohan@allsouls.ws)  
Lenard Starks, Assoc. Music Director (lstarks@allsouls.ws)  
Scot Hanna-Weir, Choir Director and Pianist (shanna-weir@allsouls.ws)  
Amy Mulry Wesolek, Director of Membership and Welcoming (amulrywesolek@allsouls.ws)  
Laura Marshall, Office and Database Manager (lmarshall@allsouls.ws)  
Gary Penn, Communications and Space Use Manager (gpenn@allsouls.ws)

#### Board of Trustees

Mark Ewert, President (mewert@hotmail.com)  
Laurie Lester, Vice President (lesterlaura@gmail.com)  
Sterling Lloyd, Jr., Vice President (slloydjr@yahoo.com)  
Shirley Blakely (shirley\_blakely@yahoo.com)  
Victor Branham (victorbranham@me.com)  
Kathy Mulvey (mulveykathy@gmail.com)  
Brenda Barbour (bbarbour@worldbank.org)  
Brian Marshall (brian.simmonds@gmail.com)  
Julia Sayles (jlsayles@gmail.com)

#### Officers

Mark Matthews, Secretary (mmatth2112@aol.com)  
Christina Lohs, Assistant Secretary (christinalohs@yahoo.com)  
Grant Smith, Membership Secretary (romerodep2@yahoo.com)  
Cheryl Gray, Treasurer (cherylwgray@yahoo.com)  
Alexandra Beninda, Assistant Treasurer (alexandrabeninda@gmail.com)  
Erika Landberg, Moderator (erika.landberg@gmail.com)

## All Souls Church Unitarian

1500 Harvard Street NW  
Washington DC 20009

*Return service requested*

Deadlines for ***The Spirit of All Souls*** fall on the third Fridays of the month preceding the issue. Send submissions to Gary Penn (gpenn@allsouls.ws) with the word "Spirit" plus a short descriptive phrase in the subject line.

#### Upcoming deadlines

November issue: October 19

December issue: November 23

Help save the planet and money by receiving *The Spirit* by email only. Contact Laura Marshall (lmarshall@allsouls.ws/202.332.5266) with your email address, and take the opportunity to update your other information for our database. This helps ensure that you receive all publications and communications by email and only legally required notices by mail. Thank you for your help.